

VILLA SANTA MARGHERITA

Pedale di Santa Margherita Ligure



VILLA BY THE SEA

40s

On the Rossetti a Pedale seafront Santa Margherita Ligure, in an exclusive dominant and privileged position, with southern exposure with sea view, important single-family villa from the 1940s of 700 m2 surrounded by a large outdoor garden.

It has a large garage and private access, a tunnel dug into the rock to reach the internal lift that serves all floors of the villa, each of which enjoys large terraces and sea views.

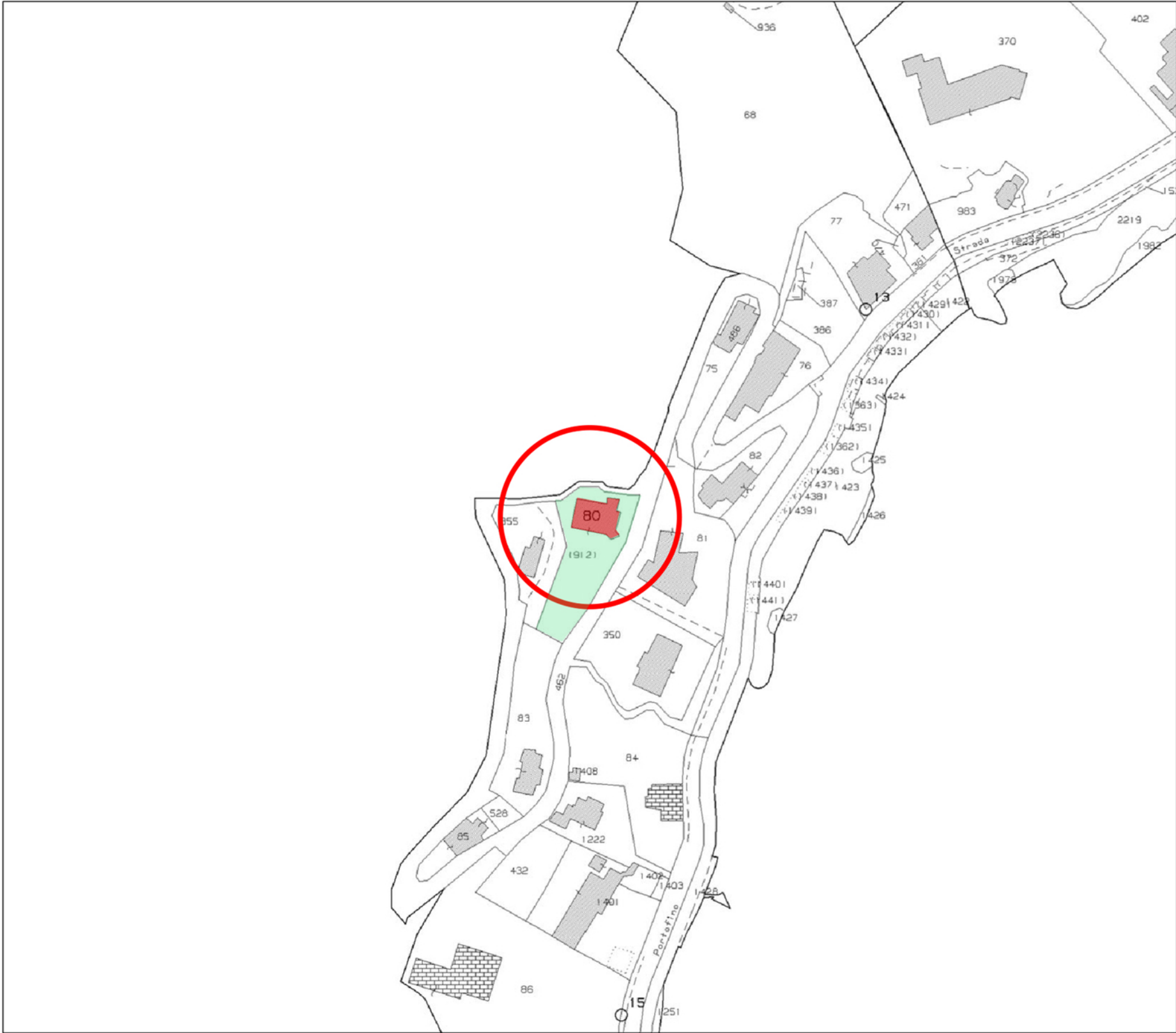
The villa consists of a ground floor for use with ancillary rooms (entrance, corridor, technical rooms and garage for two cars); above there are 4 floors for residential use containing two distinct units real estate.



AWAKEN SEA VIEW



surrounded by greenery



MAPPA CATASTALE



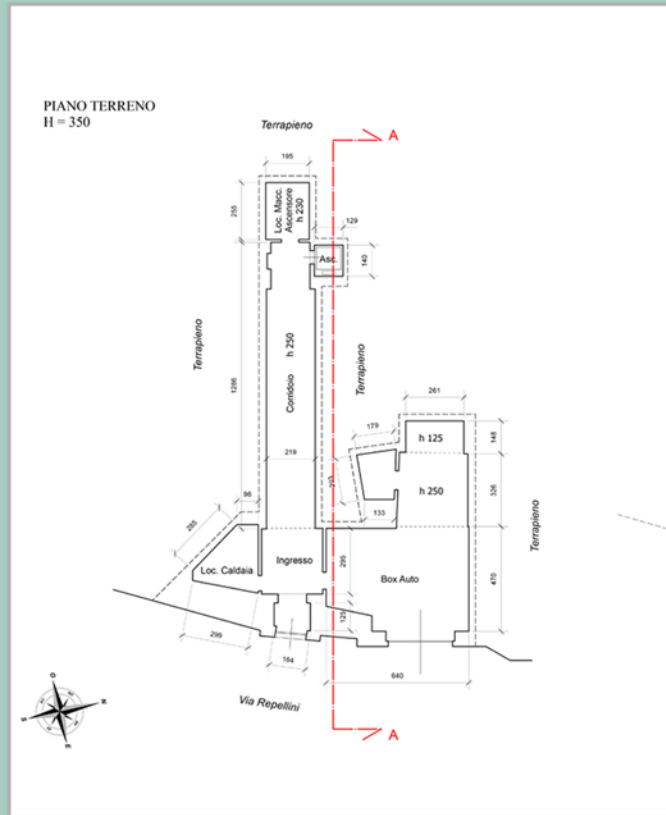
■ Building

■ Propriety

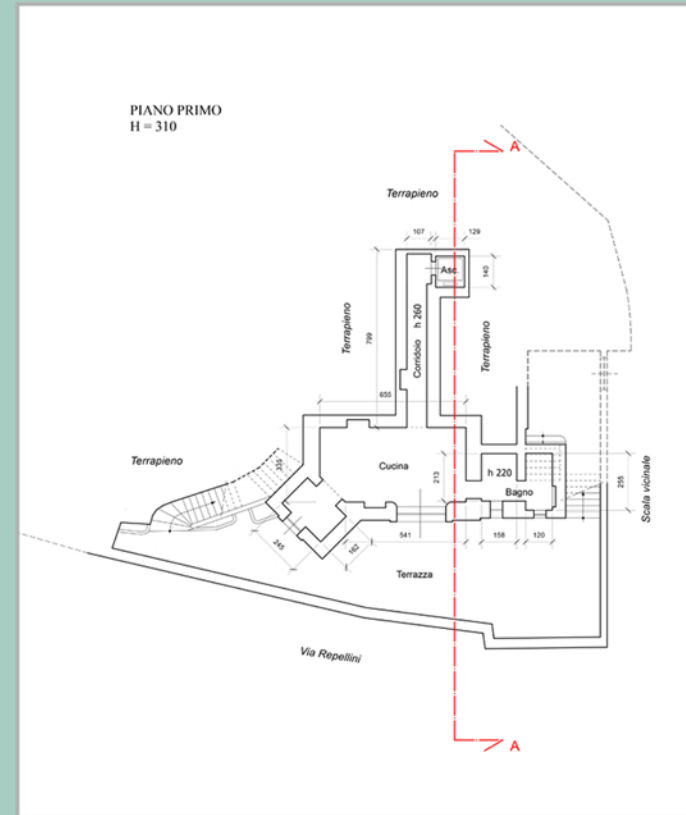
THE VIEW



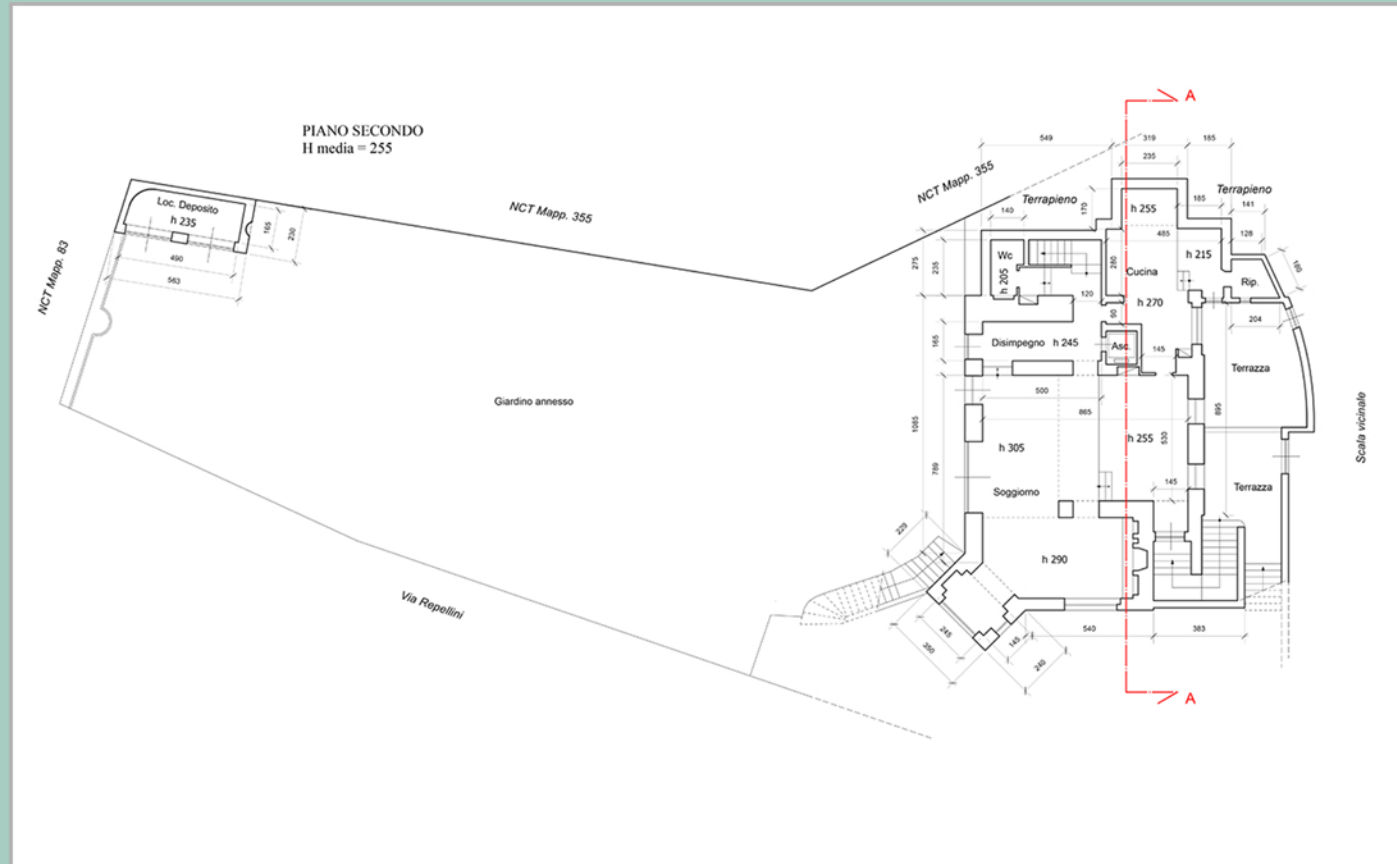
GROUND FLOOR



FIRST FLOOR

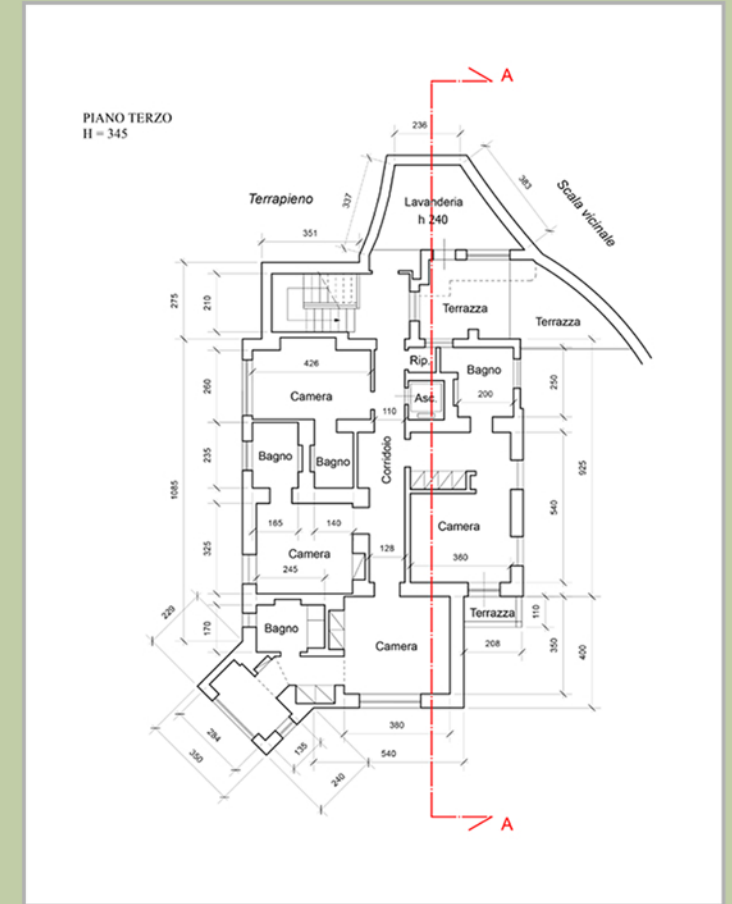


SECOND FLOOR

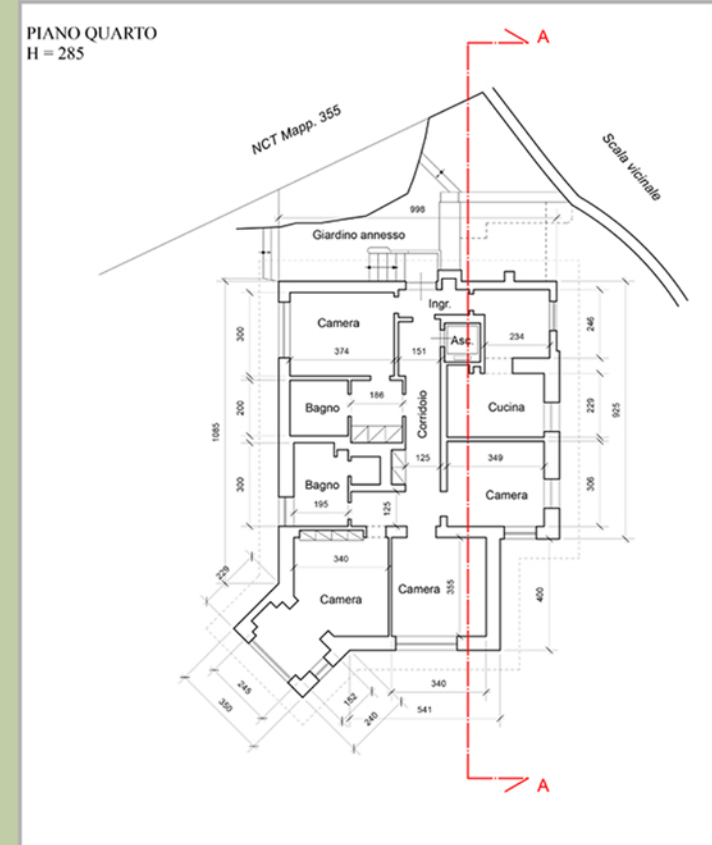




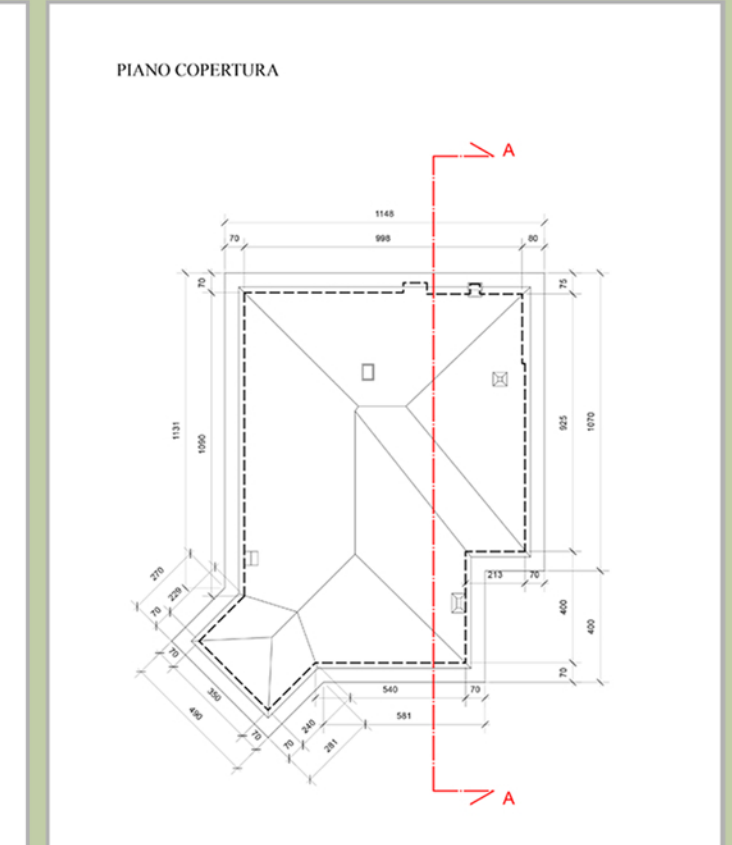
THIRD FLOOR



FOURTH FLOOR



ROOF PLAN

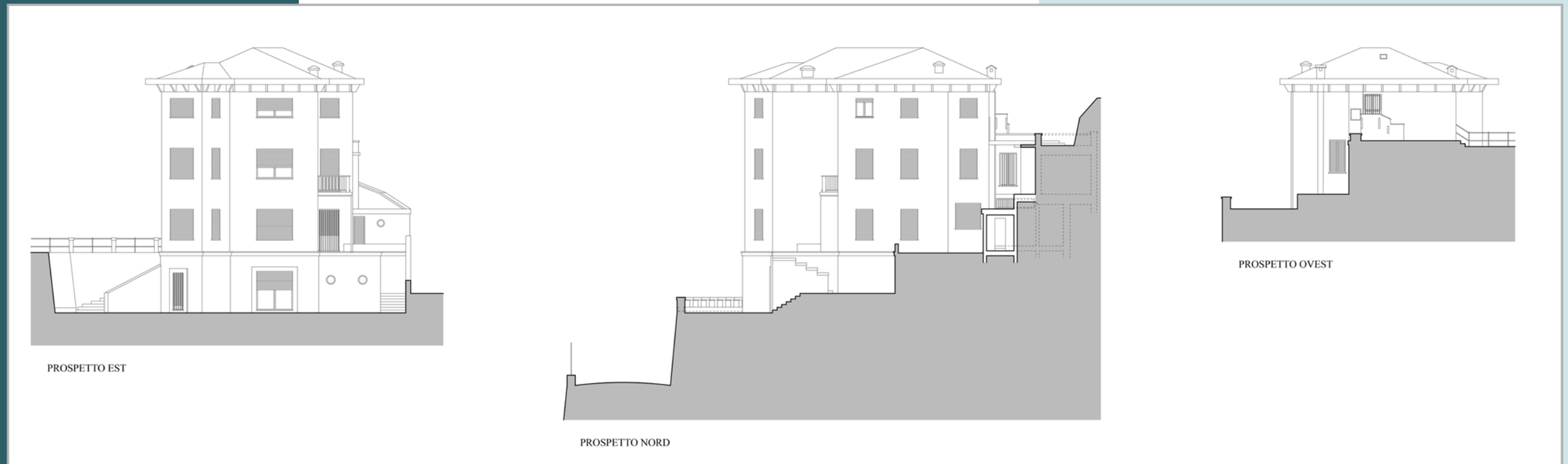


PLANS

Sections

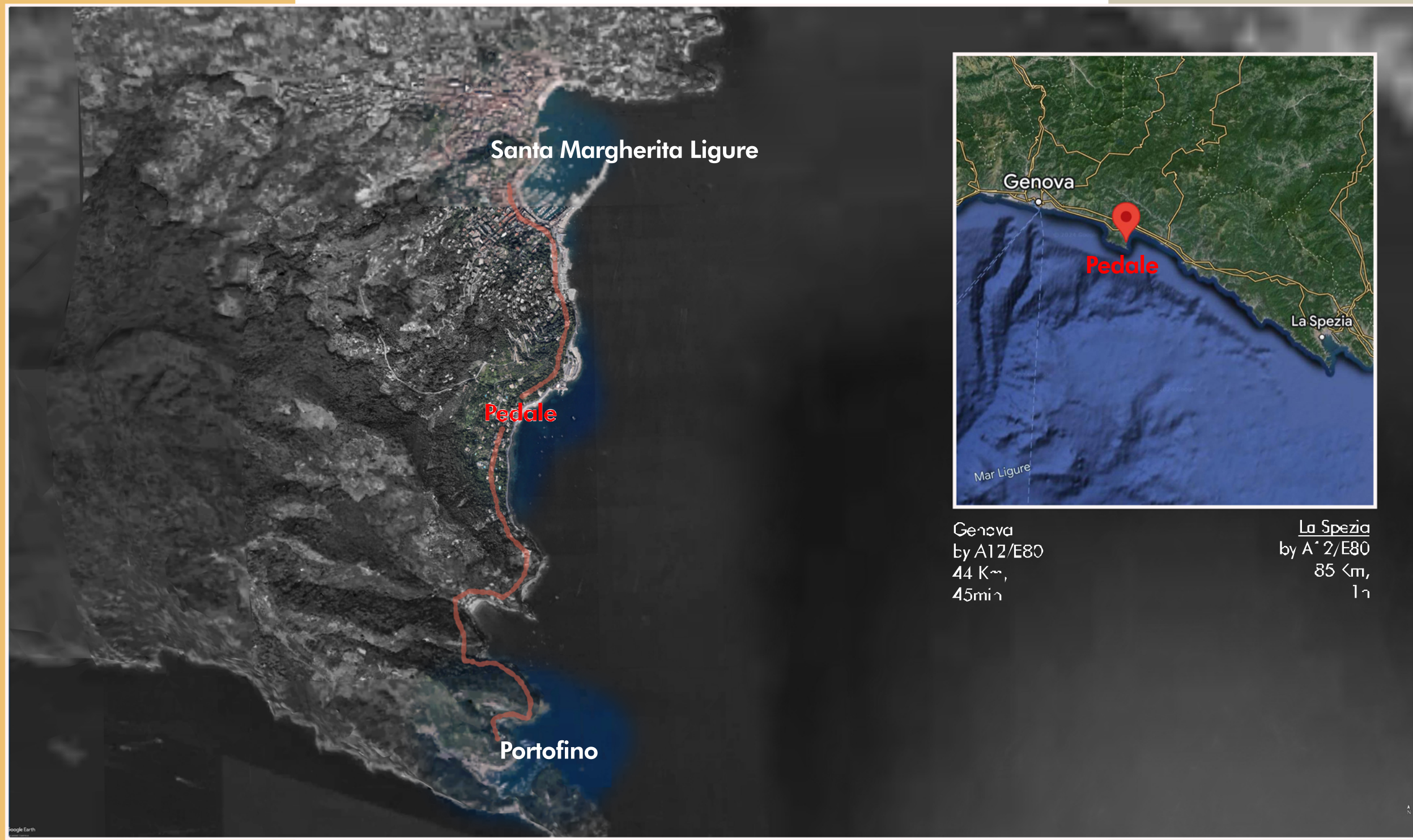


Elevations





INTERIORS



Portofino



Via Strada Provinciale 227
3,1 Km,
7 min



Santa Margherita Ligure

Via Strada Provinciale 227
3,1 Km,
7 min

